

Sharpedo instructions

step 1



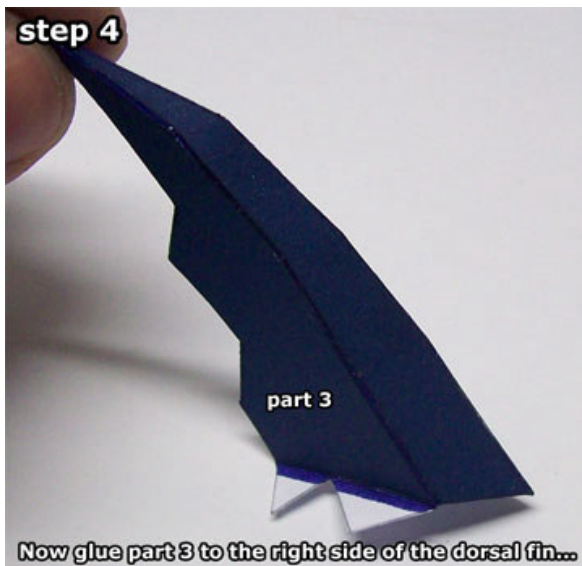
step 2



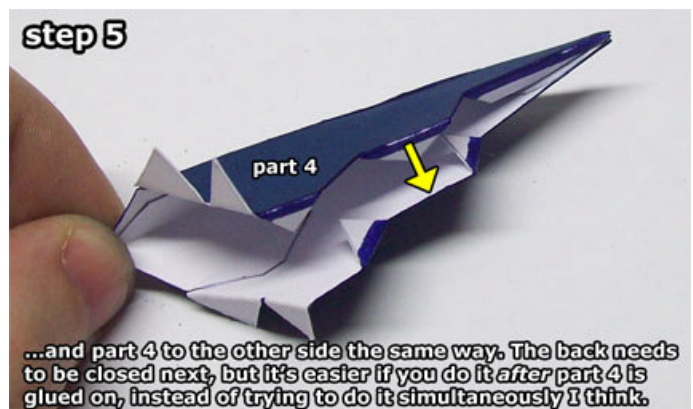
step 3

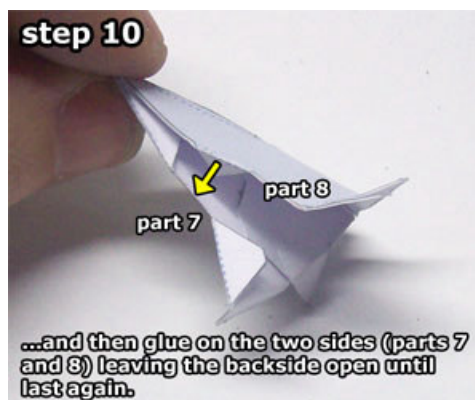
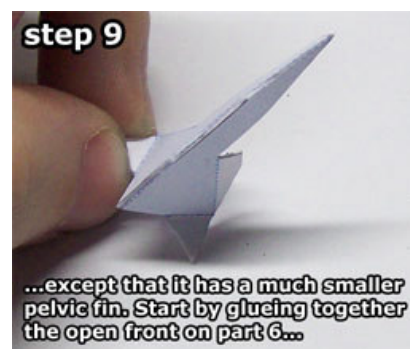
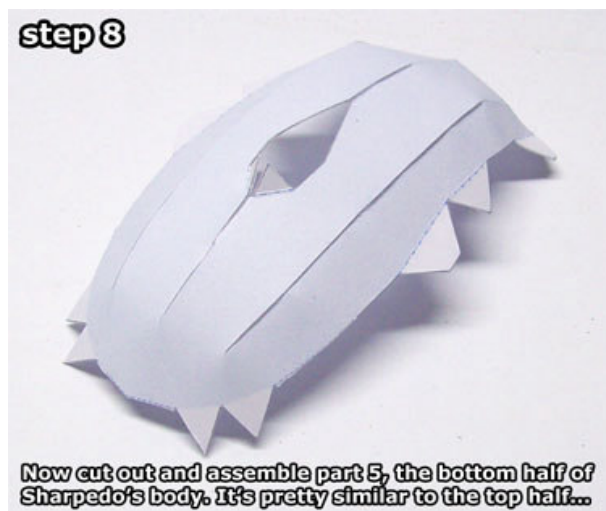


step 4

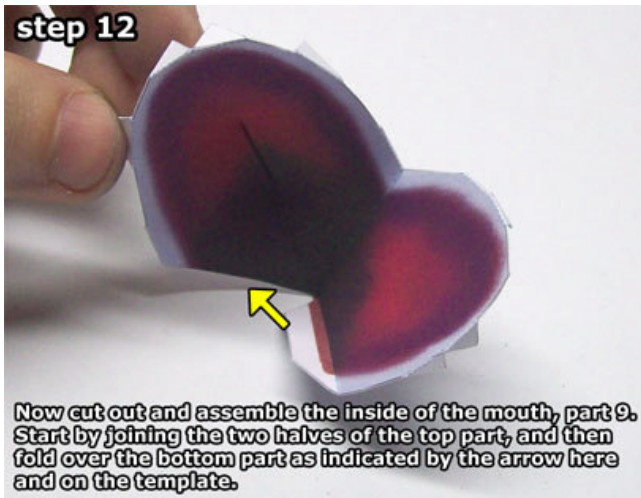


step 5



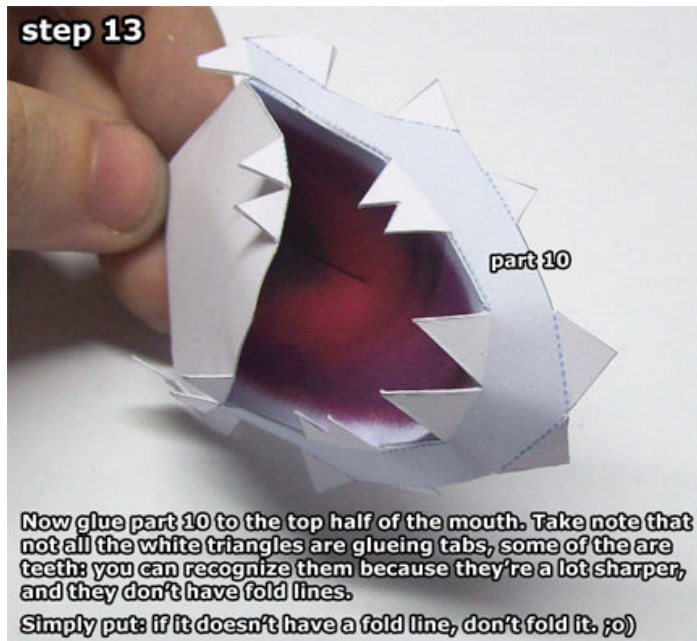


step 12



Now cut out and assemble the inside of the mouth, part 9. Start by joining the two halves of the top part, and then fold over the bottom part as indicated by the arrow here and on the template.

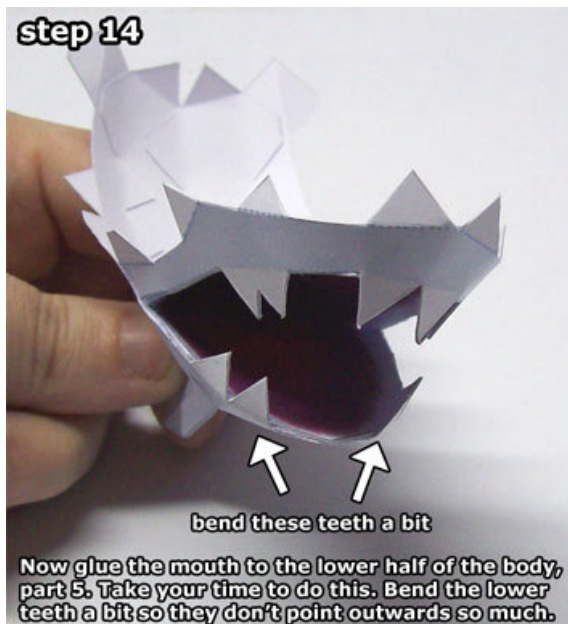
step 13



Now glue part 10 to the top half of the mouth. Take note that not all the white triangles are glueing tabs, some of the are teeth: you can recognize them because they're a lot sharper, and they don't have fold lines.

Simply put: if it doesn't have a fold line, don't fold it. ;o)

step 14



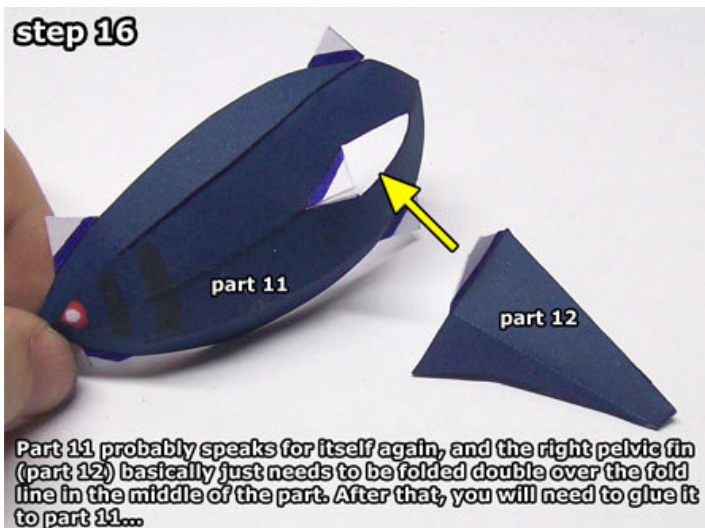
Now glue the mouth to the lower half of the body, part 5. Take your time to do this. Bend the lower teeth a bit so they don't point outwards so much.

step 15



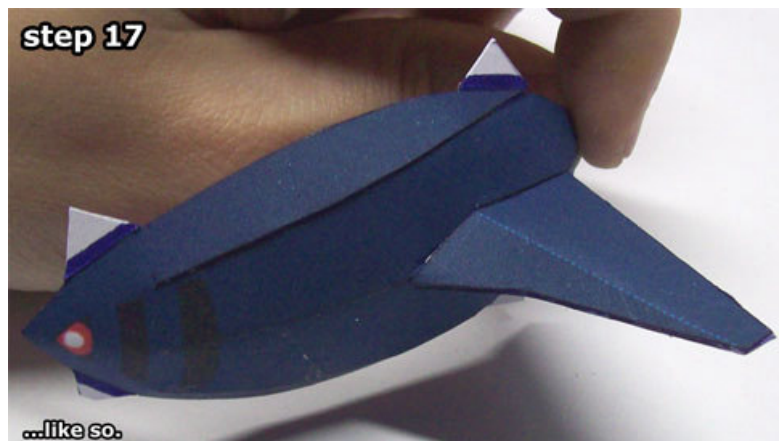
Now glue the top half of the body to the top of the mouth. Take your time again, to get all the curves just right.

step 16



Part 11 probably speaks for itself again, and the right pelvic fin (part 12) basically just needs to be folded double over the fold line in the middle of the part. After that, you will need to glue it to part 11...

step 17



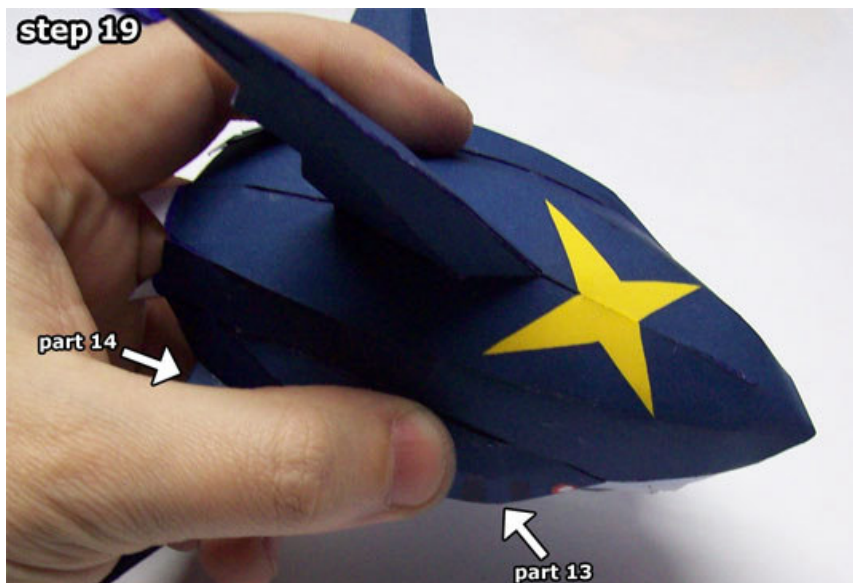
...like so.

step 18



Now you will need to glue part 11 to Sharpedo's body. Take your time to get the best result.

step 19



Now you need to do the same for parts 13 and 14 on the other side, which is a bit trickier of course, because now you can only use the hole on the back of Sharpedo's body... Use a tool like the back end of a spoon if your fingers aren't long enough.

step 20



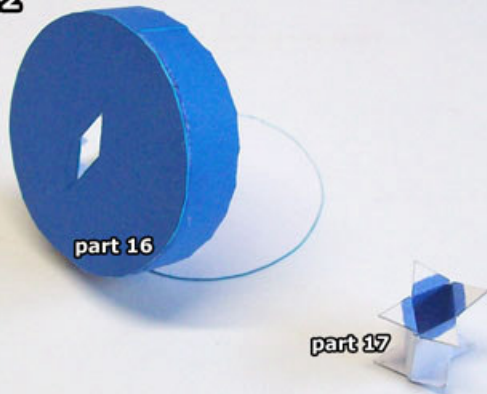
Now glue the center of part 15 together...

step 21



...and when the glue has dried, glue it to the back of Sharpedo's body. If you're having trouble getting the hole into the right shape, gently push against the sides.

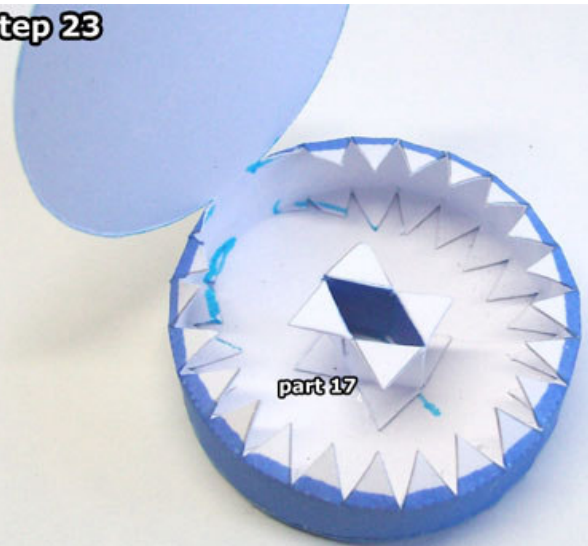
step 22



If you want to use the stand, I really recommend using thicker paper. Cut out the "<>" shaped hole on part 16 and glue the top to the sides, but NOT the bottom yet!

As for part 17, you have to give it the same "<>" shape, with the blue colour on the inside as shown here.

step 23



Now glue part 17 over (or rather, under) the hole on part 16...

step 24



...and then close the bottom of part 16. The stand works by clenching the pelvic fin between the front and the back of the hole...

step 25



...like this. I hope you had fun building Sharpedo!